

FAE COTTAGE

Drawing Hair for Beginners



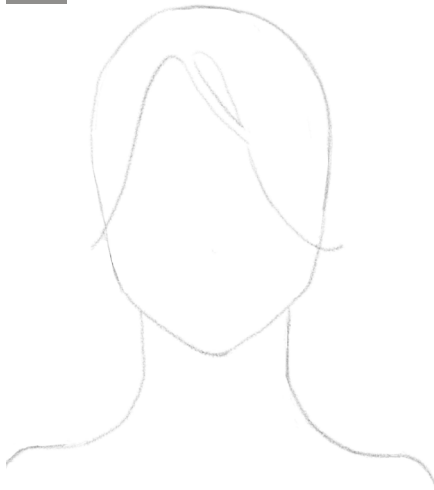
by Janna
Kennelly

Step by Step Instrucitons for 5 Cute Hairstyles



How to Draw Long Layered Hair

1



Establish the hairline which is below the top of the head.

2



Look at the flow of the hair and draw in some large sections.

3



Add in a few individual hairs in each section to indicate for direction the hair is moving.

5



4



Where is your light source coming from? Use shading to create depth.

How to Draw Male Layered Hairstyle

1



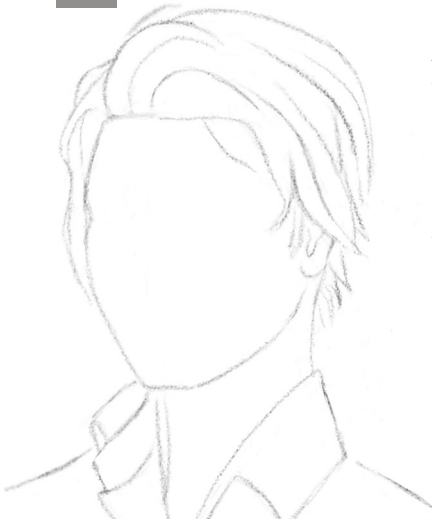
When you are drawing in the hairline, imagine how a swim cap would fit over the head and mark these lines lightly with your pencil.

2



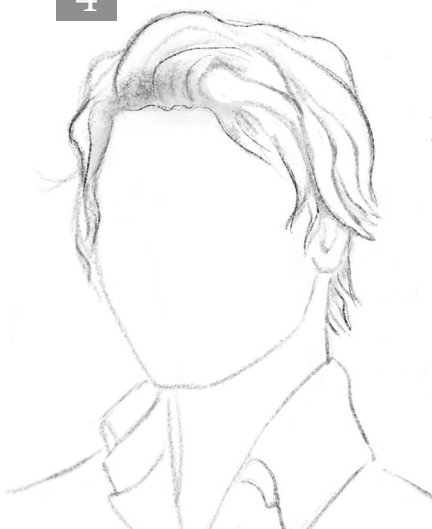
Divide into large chunks. Remember that the hair doesn't lie flat against the skull.

3



Add more lines to indicate movement. Let a few strands of hair fall across the face to make it look more realistic.

4



When shading, always think about where your light source is coming from.

Here, the light is coming from the left and slightly behind, so the hairline, and the left side of the head are darkened.



How to Draw a Ponytail

1



Start by drawing sections of hair rather than individual strands.

Begin at the crown. Think of the sections as ribbons

2



Imagine there is already a band at the back of the head. Sections below the band have an upward curve.

Sections above the band have a downward curve.

3



Now for the ponytail! Still drawing in sections, make some wavy hair pieces.

4



Now it's time to draw in some strands of hair. Make quick strokes that taper off.

Try using a blending stump after you add in some shading.



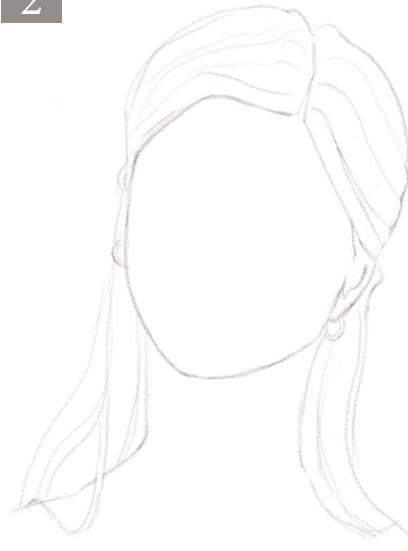
How to Draw Long Straight Hair

1



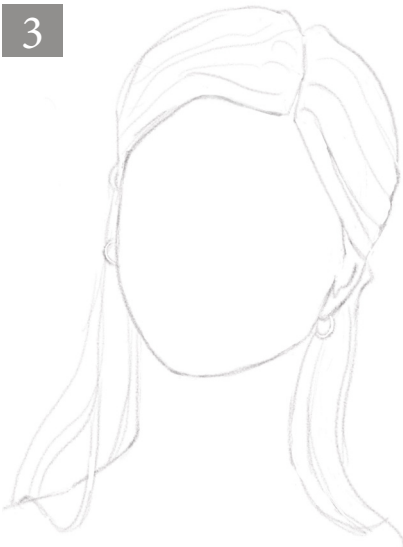
Even when the head in your reference seems to be facing forward, pay attention to the tilt and the angle.

2



The hairline is generally placed around 1/4 below the top of the head, but it also depends on whether the head is tilting forward or backward.

3



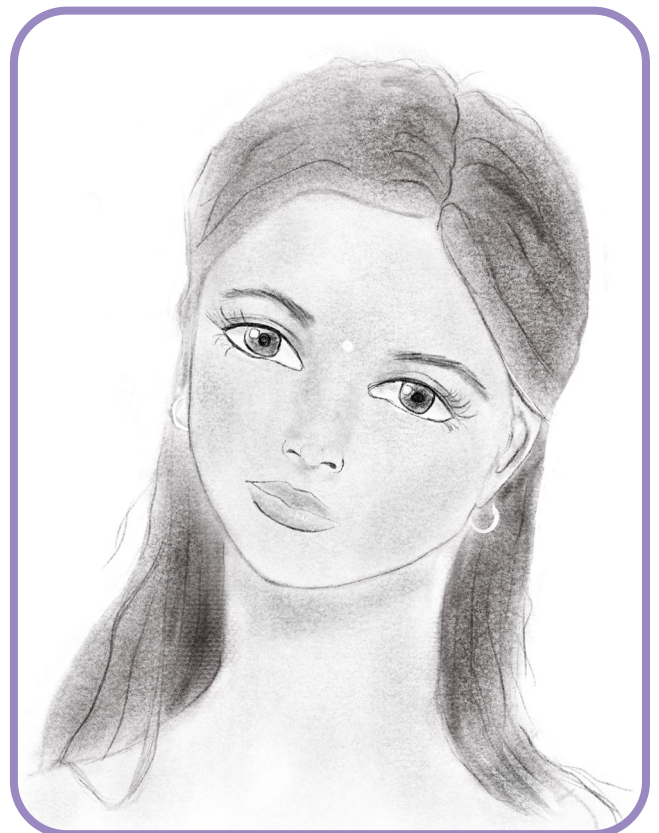
Straight hair is more affected by gravity than wavy or curly hair. Notice how the strand on the left hangs loosely over the shoulder.

4



When drawing darker hair shades, shade the entire area first, and darken shadow areas even more.

Tip: To shade darker hair, use the side of your pencil and then even out the color with a blending stump.



How to Draw Braided Hair

1



Draw the hairline at the top of the forehead. Hair also extends above the scalp.

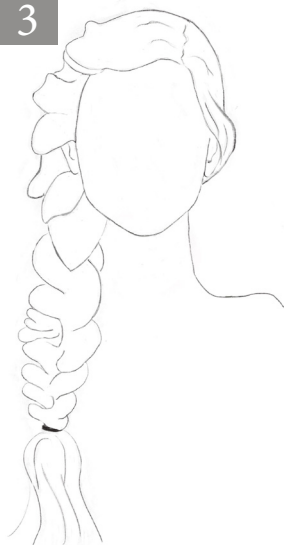
After you place the hairline and hair height, you can erase the top of the head

2



Divide the hair into sections.

3



Add braids section by section. Sections are not all alike, especially in messy braids like this one.

4



Now, add some individual hair strands to show the direction of the hair.

You can add some shading and blend with blending stump. Make areas receding darker, and areas where the light is hitting will stand out.

